

# **ATTACHMENT E**

**DARLING HARBOUR CATCHMENT FLOOD  
STUDY (DRAFT REPORT)**



# Darling Harbour Catchment Flood Study

**Final Report**

**October 2014**



# Darling Harbour Flood Study

## Final Report

Prepared For: City of Sydney

Prepared By: BMT WBM Pty Ltd (Member of the BMT group of companies)

### **Offices**

*Brisbane  
Denver  
Mackay  
Melbourne  
Newcastle  
Perth  
Sydney  
Vancouver*

## DOCUMENT CONTROL SHEET

<p><b>BMT WBM Pty Ltd</b>                  BMT WBM Pty Ltd                  Level 1, 256-258 Norton Street                  PO Box 194                  LEICHHARDT NSW 2040                  Australia</p> <p>Tel: +61 2 8987 2900                  Fax: +61 2 8987 2999</p> <p>ABN 54 010 830 421</p> <p><a href="http://www.bmtwbm.com.au">www.bmtwbm.com.au</a></p>	<p><b>Document :</b> R.S20012.001.03.Stage5_FinalReport</p> <p><b>Project Manager :</b> Darren Lyons</p> <hr/> <p><b>Client :</b> City of Sydney</p> <p><b>Client Contact:</b> Shah Alam</p> <p><b>Client Reference</b> 2013/033937</p>
--	---

<b>Title :</b>	Darling Harbour Flood Study
<b>Authors :</b>	Bowen Hicks, Darren Lyons
<b>Synopsis :</b>	Final report for the Darling Harbour Flood Study.

### REVISION/CHECKING HISTORY

REVISION NUMBER	DATE OF ISSUE	CHECKED BY		ISSUED BY	
3	23/10/2014	B. Hicks	23/10/2014	B. Hicks	23/10/2014
2	13/10/2014	B. Hicks	10/010/2014	B. Hicks	10/10/2014
1	24/06/2014	D. Lyons	23/06/2014	B. Hicks	23/06/2014

### DISTRIBUTION

DESTINATION	REVISION			
	0	1	2	3
City of Sydney	1			
BMT WBM File	1			
BMT WBM Library	1			

## FORWARD

The NSW State Government's Flood Prone Land Policy is directed towards providing solutions to existing flooding problems in developed areas and to potential future increases in flood risk, and ensuring that new development is compatible with the flood hazard and does not create additional flooding problems in other areas. Consideration is also given to the change in flood risk to existing and future development through potential climate change. Policy and practice are defined in the NSW State Government's Floodplain Development Manual (2005).

Under the Policy the management of flood liable land remains the responsibility of Local Government. The NSW State Government subsidises floodplain management studies and flood mitigation works to manage existing problems and provides specialist technical advice to assist Council in the discharge of Council's floodplain management responsibilities.

The Policy provides for technical and financial support by the NSW State Government through the six sequential stages:

**1. Formation of a Committee**

- Established by Council and includes community group representatives and State agency specialists.

**2. Data Collection**

- Past data such as flood levels, rainfall records, land use, soil types etc.

**3. Flood Study**

- Determines the nature and extent of the flood problem.

**4. Floodplain Risk Management Study**

- Evaluates management options for the floodplain in respect of both existing and proposed developments.

**5. Floodplain Risk Management Plan**

- Involves formal adoption by Council of a plan of management for the floodplain.

**6. Implementation of the Floodplain Risk Management Plan**

- Construction of flood mitigation works to protect existing development. Use of local environmental plans to ensure new development is compatible with the flood hazard.

This study represents Stages 2 and 3 of this process and aims to provide an understanding of existing and future flood behaviour within the Darling Harbour Catchment.

## EXECUTIVE SUMMARY

### Introduction

The Darling Harbour Catchment Flood Study has been prepared for the City of Sydney to define the existing flood behaviour in the Darling Harbour catchment and establish the basis for subsequent floodplain management activities.

The study is being prepared to meet the objectives of the NSW State Government's Flood Prone Land Policy.

The primary objective of the Flood Study is to define the flood behaviour within the Darling Harbour catchment through the establishment of appropriate numerical models. The study has produced information on flood flows, velocities, levels and extents for a range of flood event magnitudes under existing catchment conditions. Specifically, the study incorporates:

- Compilation and review of existing information pertinent to the study and acquisition of additional data including survey as required;
- Development and calibration of appropriate hydrologic and hydraulic models;
- Determination of design flood conditions for a range of design events including the 2 year ARI, 5 year ARI, 10% AEP, 5% AEP, 2% AEP, 1% AEP, 0.2% AEP and PMF event; and
- Presentation of study methodology, results and findings in a comprehensive report incorporating appropriate flood mapping.

### *Catchment Description*

The catchment is fully developed and comprises predominantly high-density housing and commercial development. There are some large open spaces within the catchment including Belmore Park, Harmony Park and part of Hyde Park. The lower portion of the catchment includes Tumbalong Park and the Chinese Garden of Friendship near the main discharge point to Cockle Bay. The catchment includes large facilities such as the Sydney Entertainment Centre, Sydney Exhibition Centre and part of the UTS premises.

The catchment covers an area of about 307 ha and drains into the Sydney Harbour at various locations with the majority of the catchment discharging to Darling Harbour via Sydney Water's main trunk drainage system. This trunk drainage network is connected to Council's minor stormwater drainage system which comprises covered channels, pipes, culverts and pits. There are no open channel reaches within the Darling Harbour catchment.

A major infrastructure project is planned within the Darling Harbour study area. The Sydney International Convention Exhibition and Entertainment Precinct (SICEEP) is to be constructed, replacing the existing Sydney Entertainment Centre and Sydney Exhibition Centre.

The topography within the Darling Harbour catchment varies from steep surface slopes in excess of 10% in the upper catchment to the near- flat lower catchment near the Sydney Harbour shoreline. The catchment therefore has regions where surface water runoff within the road network has high

velocity with shallow depths, whilst in the lower catchment surface water is more likely to pond in sag points and flow velocities will be lower. The lower reaches of the catchment fringing the Sydney Harbour are potentially affected by elevated water levels within the Harbour.

Within the catchment there are various excavation and cuttings, resulting in some vertical drops of over 10m.

The entire catchment is highly developed with very little opportunity for water to infiltrate due to the high degree of impervious surfaces. It has been calculated that the combined area of roofs and roads is in excess of 50% of the catchment area. As a sign of the age of the region and high density nature, most properties are brick or sandstone construction with common walls to neighbours. There are very few opportunities for flow to pass through or between properties and as a result the roads form the primary overland flow paths.

### ***Historic Flooding***

Council has indicated that flooding within the catchment occurs at various locations in rainfall events exceeding 2 year ARI. June 1949, November 1961, March 1973, November 1984, January 1991 and February 2001 are noted historic major storm events which resulted in extensive flooding. Rainfall analysis was undertaken for these months using the Observatory Hill rain gauge. The November 1984 rainfall event was the largest analysed and was in excess of a 0.2 % AEP (500 year ARI) event.

It should be noted that the most recent of these key flood events (2001) occurred over 10 years ago and given the amount of time that has since passed it has been difficult obtaining records of flood behaviour for any of these events, specifically:

- Peak flood level survey data are not available for any of these events;
- Review of archived newspaper articles has found limited reports of the 1949 and other events. This data is useful, though due to its anecdotal nature it has limited value with respect to quantitative calibration data (e.g. observed flood levels and depths);
- Limited data has been recorded in the Sydney Water flooding database; and
- The median term of residency determined from the community consultation (refer to Section 3) is 8 years, indicating that many of the current residents did not experience any of these historic flooding events.

### ***Community Consultation***

Community consultation has been an important component of the current study. The consultation has aimed to inform the community about the development of the flood study and its likely outcome as a precursor to subsequent floodplain management activities. It has provided an opportunity to collect information on community members' flood experiences in the catchment and to collect feedback on concerns regarding flooding.

The key elements of the consultation process have been as follows:

- Distribution of a questionnaire to landowners, residents and businesses within the study area via mail delivery and online from the City of Sydney website;



- Regular presentations of progress to the Floodplain Management Committee, which includes community representatives and Council staff; and
- Review of the draft Flood Study by the Floodplain Management Committee.

### ***Model Development***

Development of hydrologic and hydraulic models have been undertaken to simulate flood conditions in the catchment. Traditionally the hydrological model provides for simulation of the rainfall-runoff processes. The hydraulic model, utilising established flows from the hydrologic model, simulates flood depths, extents and velocities.

The hydrologic and hydraulic modelling has been combined in TUFLOW two dimension (2D) software developed by BMT WBM, using the “direct-rainfall” approach (also referred to as “rainfall-on-grid”). A direct-rainfall approach models at the resolution of the grid all the minor flow features and also spatial variability in land uses categories which define rainfall infiltration potential and resistance to flow. Verification of the direct-rainfall approach has been undertaken by comparing results obtained using traditional hydrological modelling (WBNM) techniques.

The entire Darling Harbour catchment is modelled in the 2D domain while approximately 26 km of sub-surface pipe network is modelled as 1D elements dynamically linked to the 2D domain. The dynamically linked 1D pit and pipe network means that pit inlets and pipe surcharging is modelled to allow interaction with overland flows.

The 1D/2D modelling approach is suited to model the complex interactions between overland flows and sub-surface stormwater network and the converging and diverging flows through the urban environment.

The Digital Terrain Model (DTM) which underpins the 2D model was defined using aerial survey data provided by Council.

### ***Model Calibration and Validation***

The selection of suitable historical events for calibration of computer models is largely dependent on available historical flood information. Ideally the calibration and verification process should cover a range of flood magnitudes to demonstrate the suitability of a model for the range of design event magnitudes to be considered.

Review of the available data for the Darling Harbour catchment, including rainfall and tidal data, community consultation data, archived newspaper articles and Sydney Water flooding database, showed there are very few events with any recorded flood levels or observations of flood behaviour within the catchment.

Following assessment of available data and community consultation feedback, the 12 August 1983 and 3 April 2013 events were selected for the model calibration and verification process. To maximise the value of the community consultation, the 8 March 2012 event has been used to verify general flooding behaviour reports within the Darling Harbour catchment.

The model was found to provide a good representation of the observed flood behaviour in the catchment.

### ***Design Event Modelling and Mapping***

The developed model has been applied to derive design flood conditions for the Darling Harbour catchment. Design rainfall depth is based on the generation of intensity-frequency-duration (IFD) design rainfall curves utilising the procedures outlined in AR&R (2001). A range of storm durations using standard AR&R (2001) temporal patterns, were modelled. The design results represent the maximum envelope of all the durations assessed for the given design event frequency.

The design events considered in this study include the 2 year ARI, 5 year ARI, 10% AEP, 5% AEP, 2% AEP, 1% AEP, 0.2% AEP and PMF events. The model results for the design events considered have been presented in a detailed flood mapping series for the catchment (Appendix A). The flood data presented includes design flood inundation, peak flood water levels and depths and peak flood velocities.

Provisional flood hazard categorisation in accordance with Figure L2 of the NSW Floodplain Development Manual (2005) has been mapped in addition to the hydraulic categories (floodway, flood fringe and flood storage) for flood affected areas.

Flood Emergency Response Planning Classifications (DECC, 2007) have been prepared for the range of design events considered.

### ***Sensitivity Testing and Climate Change***

A number of sensitivity tests have been undertaken to identify the impacts of the adopted model conditions on the design flood levels. Sensitivity tests included:

- The impact of potential future climate change, including sea level rise and increased rainfall intensities;
- Changes in the adopted design rainfall loss parameters;
- Changes in the adopted roughness parameters; and
- Stormwater drainage system blockages.

Results were shown to be generally insensitive to the values adopted for deriving the design flood levels and extents for the hydraulic roughness and rainfall losses tests. Higher sensitivity was exhibited for stormwater drainage system blockages for frequent events at trapped low points.

The most significant impacts of climate change are lower in the study area near Haymarket and Tumbalong Park where flood levels are shown to increase for both the increased rainfall intensity scenario and also for the sea level rise scenario.

### ***Conclusion***

The primary objective of the Flood Study was to define the flood behaviour of the Darling Harbour catchment through the establishment of an appropriate numerical model. The principal outcome of the flood study is an understanding of flood behaviour in the catchment and in particular the design flood level information that will be used to set appropriate flood planning levels. The flood study forms

the basis for the subsequent floodplain risk management activities, being the next stage of the floodplain management process. Accordingly, the adoption of the flood study and predicted design flood levels is recommended.

## CONTENTS

<b>Forward</b>	<b>i</b>
<b>Executive Summary</b>	<b>ii</b>
<b>Contents</b>	<b>vii</b>
<b>List of Report Figures</b>	<b>xi</b>
<b>List of Appendix A Figures</b>	<b>xii</b>
<b>List of Tables</b>	<b>xiii</b>
<b>GLOSSARY</b>	<b>I</b>
<b>1 INTRODUCTION</b>	<b>1</b>
<b>1.1 The Study Location</b>	<b>1</b>
<b>1.2 The Need for Floodplain Management within the Darling Harbour Catchment</b>	<b>1</b>
<b>1.3 The Floodplain Management Process</b>	<b>3</b>
1.3.1 Climate Change Policy	3
<b>1.4 Study Objectives</b>	<b>4</b>
<b>1.5 About this Report</b>	<b>5</b>
<b>2 STUDY APPROACH</b>	<b>7</b>
<b>2.1 The Study Area</b>	<b>7</b>
2.1.1 Catchment Description	7
2.1.2 Stormwater Drainage System	7
2.1.3 Known Flooding Problems	9
<b>2.2 Compilation and Review of Available Data</b>	<b>10</b>
2.2.1 Introduction	10
2.2.2 Previous Studies and Investigations	10
2.2.2.1 <i>Summary of Previous Studies</i>	12
2.2.3 Rainfall Data	12
2.2.4 Stream Gauge Data	13
2.2.5 Harbour Water Level Data	13
2.2.6 Flood Level Data	15
2.2.7 Topographic Data	15
2.2.8 Council GIS Data	17
2.2.9 Stormwater Drainage Network	17
<b>2.3 Sydney Water Corporation Historical Flood Database</b>	<b>20</b>
<b>2.4 Review of Historical Newspaper Articles (TROVE)</b>	<b>22</b>

<b>2.5</b>	<b>Site Inspections</b>	<b>24</b>
<b>2.6</b>	<b>Community Consultation</b>	<b>24</b>
<b>2.7</b>	<b>Development of Computer Models</b>	<b>24</b>
2.7.1	Hydrological Model	24
2.7.2	Hydraulic Model	25
<b>2.8</b>	<b>Model Calibration/Validation and Sensitivity Analysis</b>	<b>25</b>
<b>2.9</b>	<b>Establishing Design Flood Conditions</b>	<b>25</b>
<b>2.10</b>	<b>Mapping of Flood Behaviour</b>	<b>26</b>
<b>2.11</b>	<b>Conclusion</b>	<b>26</b>
<b>3</b>	<b>COMMUNITY CONSULTATION</b>	<b>27</b>
3.1	The Community Consultation Process	27
3.2	Community Questionnaire	27
3.3	Conclusion	31
<b>4</b>	<b>MODEL DEVELOPMENT</b>	<b>32</b>
4.1	Introduction	32
4.2	Hydrological Model	33
4.2.1	Catchment Delineation	33
4.2.2	Rainfall Data	34
4.2.3	Rainfall Losses	34
4.3	Hydraulic Model	35
4.3.1	Topography	35
4.3.2	Buildings	35
4.3.3	Underground Carparks	36
4.3.4	Stormwater Drainage Network	36
4.3.5	Hydraulic Roughness	38
4.3.6	Boundary Conditions	40
<b>5</b>	<b>MODEL CALIBRATION AND VERIFICATION</b>	<b>41</b>
5.1	Introduction	41
5.2	Selection of Calibration Events	41
5.3	Model Parameters Adopted for Calibration	42
5.4	Model Calibration – 12 August 1983	43
5.4.1	Rainfall and Harbour Water Level Data	43
5.4.2	Observed and Simulated Flood Behaviour	43
5.5	Model Calibration – 3 April 2013	46
5.5.1	Rainfall and Harbour Water Level Data	46

5.5.2	Observed and Simulated Flood Behaviour	46
<b>5.6</b>	<b>Model Calibration – 8 March 2012</b>	<b>49</b>
5.6.1	Rainfall and Harbour Water Level Data	49
5.6.2	Observed and Simulated Flood Behaviour	49
5.6.2.1	<i>Pitt Street (near Wilmot Street), Sydney</i>	49
5.6.2.2	<i>Corner of Goulburn Street and Wentworth Street, Sydney</i>	50
5.6.2.3	<i>Commonwealth Street, Surry Hills (flooding from Batman Lane)</i>	51
5.6.2.4	<i>Crown Street Public School, Surry Hills</i>	52
<b>5.7</b>	<b>Historical Accounts of Flooding from TROVE database review</b>	<b>53</b>
<b>5.8</b>	<b>Historical Accounts of Flooding from SWC Records</b>	<b>55</b>
<b>5.9</b>	<b>Catchment Flow Verification</b>	<b>57</b>
5.9.1	Watershed Bound Network Model (WBNM)	57
5.9.2	Flow Verification Results	59
<b>5.10</b>	<b>Model Parameters Adopted for Design Event Modelling</b>	<b>61</b>
<b>5.11</b>	<b>Summary of Model Calibration</b>	<b>61</b>
<b>6</b>	<b>DESIGN FLOOD CONDITIONS</b>	<b>62</b>
<b>6.1</b>	<b>Design Rainfall</b>	<b>62</b>
6.1.1	Rainfall Depths	63
6.1.2	Temporal Patterns	63
6.1.3	Rainfall Losses	64
6.1.4	Critical Storm Duration	64
<b>6.2</b>	<b>Design Ocean Boundary</b>	<b>64</b>
<b>6.3</b>	<b>Pit Inlet Blockages</b>	<b>65</b>
<b>6.4</b>	<b>Modelled Design Events</b>	<b>66</b>
6.4.1	Catchment Derived Flood Events	66
6.4.2	Tidal Inundation	66
<b>6.5</b>	<b>Conclusion</b>	<b>66</b>
<b>7</b>	<b>DESIGN FLOOD RESULTS</b>	<b>67</b>
<b>7.1</b>	<b>Peak Flood Conditions</b>	<b>71</b>
7.1.1	Flooding Behaviour	71
7.1.1.1	<i>Overview</i>	71
7.1.2	Catchment-Derived Flood Events	75
7.1.3	Tidal Inundation	76
7.1.4	Potential Flooding Problem Areas	76
7.1.5	Supercritical Flows and Conjugate Depths	78
<b>7.2</b>	<b>Comparison with Previous Studies</b>	<b>78</b>

7.3	Preliminary Hydraulic Categorisation	80
7.4	Provisional Hazard Categories	81
7.5	Flood Emergency Response Classification	82
7.6	Conclusion	83
<b>8</b>	<b>SENSITIVITY ANALYSIS</b>	<b>84</b>
8.1	Hydraulic Roughness	84
8.2	Stormwater Drainage Blockage	85
8.3	Rainfall Losses	87
8.4	Tailwater Level	88
8.5	Conclusion	89
<b>9</b>	<b>CLIMATE CHANGE ANALYSIS</b>	<b>90</b>
9.1	Potential Climate Change Impacts	90
9.1.1	Ocean Water Level	91
9.1.2	Design Rainfall Intensity	91
9.2	Climate Change Model Conditions	91
9.3	Climate Change Results	92
9.4	Conclusions	93
<b>10</b>	<b>PROPERTY INUNDATION AND FLOOD DAMAGE ASSESSMENT</b>	<b>95</b>
10.1	Property Data	95
10.1.1	Location	95
10.1.2	Land Use	95
10.1.3	Ground and Floor Level	95
10.1.4	Flood Level	96
10.2	Property Inundation	96
10.3	Flood Damages Assessment	98
10.4	Types of Flood Damage	98
10.4.1	Basis of Flood Damage Calculations	99
<b>11</b>	<b>REFERENCES</b>	<b>101</b>
	<b>APPENDIX A: DESIGN FLOOD MAPPING</b>	<b>A-1</b>
	<b>APPENDIX B: HISTORICAL NEWSPAPER ARTICLE REVIEW</b>	<b>B-1</b>
	<b>APPENDIX C: COMMUNITY CONSULTATION</b>	<b>C-1</b>

**APPENDIX D: PIT INLET CURVES** **D-1**

**APPENDIX E: SUPERCRITICAL FLOW AND CONJUGATE DEPTHS** **E-3**

## LIST OF REPORT FIGURES

Figure 1-1 Study Area Locality	2
Figure 2-1 Darling Harbour Study Area Features	8
Figure 2-2 Rainfall Stations and Tide Gauge near Study Area	14
Figure 2-3 Darling Harbour Digital Terrain Model	16
Figure 2-4 Oviform pipe examples (SWC, 1996)	18
Figure 2-5 Pit and Pipe Infrastructure Layout	19
Figure 2-6 SWC Historic Flood Database Flooding Reports	21
Figure 2-7 Rainfall analysis for SWC historical flood database events	22
Figure 2-8 Historic Flooding Hot Spots	23
Figure 3-1 Results from the Community Consultation	28
Figure 3-2 IFD analysis of events identified in community consultation	29
Figure 3-3 Location of Community Consultation responses	30
Figure 4-1 Sample stormwater drainage line longitudinal profile	37
Figure 4-2 Linking underground 1D stormwater drainage network to the overland 2D domain	37
Figure 4-3 Land Use Categories	39
Figure 5-1 Recorded rainfall and harbour water Level – 12 August 1983	44
Figure 5-2 Comparison of 12 August 1983 rainfall with IFD relationships	44
Figure 5-3 Model Calibration Results – 12 August 1983	45
Figure 5-4 Recorded rainfall and harbour water level – 3 April 2013	47
Figure 5-5 Comparison of 3 April 2013 rainfall with IFD relationships	47
Figure 5-6 Flood model results for April 2013	48
Figure 5-7 Recorded rainfall and harbour water level – 8 March 2012	49
Figure 5-8 Comparison of 8 March 2012 rainfall with IFD relationships	50
Figure 5-9 Flooding reports at Century Tower	50
Figure 5-10 Flooding reports at corner of Goulburn and Wentworth Streets	51
Figure 5-11 Flooding reports at Commonwealth Street from Batman Lane	52
Figure 5-12 Flooding reports near Crown street school	53
Figure 5-13 Peak flood depths at Eddy Avenue near Central Railway Station	54
Figure 5-14 Peak flood depths at Haymarket and Ultimo Road	55
Figure 5-15 SWC historic flooding reports in Haymarket area	56
Figure 5-16 SWC historic flooding reports in Ultimo area	56
Figure 5-17 Sub-Catchments for Catchment Flow Verification	58
Figure 5-18 Catchment Flow Verification for Sub-Catchment 'A' (15ha area)	60



Figure 5-19 Catchment flow verification for sub-catchment 'B' (8.2ha area)	60
Figure 7-1 Reporting locations for peak flood levels	69
Figure 7-2 Reporting locations for peak flood flows	70
Figure 7-3 Darling Harbour Profile – Design Event Results	72
Figure 7-4 Foveaux Street – Design Event Results	73
Figure 7-5 Commonwealth Street Profile – Design Event Results	74
Figure 7-6 1% AEP (100 year ARI) Critical Duration Assessment	77
Figure 7-7 Provisional flood hazard categorisation	82
Figure 9-1 Climate Change – Darling Harbour Profile	94
Figure 10-1 Proportion of residential and commercial properties in Darling Harbour	96
Figure 10-2 Design event first resulting in above floor flooding.	97
Figure 10-3 Types of Flood Damage	98

## LIST OF APPENDIX A FIGURES

Figure A- 1 2YR ARI Peak Depth
Figure A- 2 5YR ARI Peak Depth
Figure A- 3 10YR ARI (10% AEP) Peak Depth
Figure A- 4 20YR ARI (5% AEP) Peak Depth
Figure A- 5 50YR ARI (2% AEP) Peak Depth
Figure A- 6 100YR ARI (1% AEP) Peak Depth
Figure A- 7 500YR ARI (0.2% AEP) Peak Depth
Figure A- 8 PMF Peak Depth
Figure A- 9 2YR ARI Peak Level
Figure A- 10 5YR ARI Peak Level
Figure A- 11 10YR ARI (10% AEP) Peak Level
Figure A- 12 20YR ARI (5% AEP) Peak Level
Figure A- 13 50YR ARI (2% AEP) Peak Level
Figure A- 14 100YR ARI (1% AEP) Peak Level
Figure A- 15 500YR ARI (0.2% AEP) Peak Level
Figure A- 16 PMF Peak Level
Figure A- 17 2YR ARI Peak Velocity
Figure A- 18 5YR ARI Peak Velocity
Figure A- 19 10YR ARI (10% AEP) Peak Velocity
Figure A- 20 20YR ARI (5% AEP) Peak Velocity
Figure A- 21 50YR ARI (2% AEP) Peak Velocity
Figure A- 22 100YR ARI (1% AEP) Peak Velocity
Figure A- 23 500YR ARI (0.2% AEP) Peak Velocity
Figure A- 24 PMF Peak Velocity
Figure A- 25 100YR ARI (1% AEP) Hydraulic Categorisation

Figure A- 26 PMF Hydraulic Categorisation	
Figure A- 27 10YR ARI (10% AEP) Provisional Hydraulic Hazard	
Figure A- 28 20YR ARI (5% AEP) Provisional Hydraulic Hazard	
Figure A- 29 100YR ARI (1% AEP) Provisional Hydraulic Hazard	
Figure A- 30 PMF Provisional Hydraulic Hazard	
Figure A- 31 100YR ARI (1% AEP) Climate Change Impacts – 10% Rainfall	
Figure A- 32 100YR ARI (1% AEP) Climate Change Impacts – 20% Rainfall	
Figure A- 33 100YR ARI (1% AEP) Climate Change Impacts – 30% Rainfall	
Figure A- 34 100YR ARI (1% AEP) Climate Change Impacts – 2050 Ocean	
Figure A- 35 100YR ARI (1% AEP) Climate Change Impacts – 2100 Ocean	
Figure A- 36 Tidal Range and Climate Change Impact (No Local Rainfall)	
Figure A- 37 2YR ARI FERC	
Figure A- 38 5YR ARI FERC	
Figure A- 39 10YR ARI (10% AEP) FERC	
Figure A- 40 20YR ARI (5% AEP) FERC	
Figure A- 41 50YR ARI (2% AEP) FERC	
Figure A- 42 100YR ARI (1% AEP) FERC	
Figure A- 43 PMF FERC	

## LIST OF TABLES

Table 1-1 Stages of the Floodplain Management Process	3
Table 2-1 Rainfall analysis of key historic rainfall events	9
Table 2-2 Rainfall stations in the Darling Harbour catchment locality area	13
Table 2-3 Sydney Harbour design still water levels	15
Table 2-4 Summary of stormwater infrastructure elements in hydraulic model	18
Table 2-5 Sydney Water flood database for Darling Harbour	20
Table 4-1 Adopted Manning’s ‘n’ hydraulic roughness values	38
Table 5-1 Available calibration data for the Darling Harbour catchment	42
Table 5-2 Adopted TUFLOW model parameters	61
Table 6-1 Design flood terminology	62
Table 6-2 Rainfall intensities for design events (mm/h)	63
Table 6-3 Local catchment flood/tailwater combinations	65
Table 7-1 Peak design flood levels	67
Table 7-2 Peak design flood flows – pipe (P) and overland (Q)	68
Table 7-3 Critical duration assessment (peak flood level difference (m) from maximum envelope)	75
Table 7-4 Comparison of design results to Hyder study	79
Table 7-5 Provisional hydraulic categories	81
Table 8-1 Changes in peak flood levels (m) for Manning’s ‘n’ sensitivity tests	85
Table 8-2 Changes in flood levels for pit inlet blockage sensitivity tests	86

---

<b>Table 8-3 Changes in peak flood levels (m) for rainfall loss sensitivity tests</b>	<b>87</b>
<b>Table 8-4 Changes in peak flood levels (m) for tailwater sensitivity tests</b>	<b>88</b>
<b>Table 9-1 Design peak Sydney Harbour water levels incorporating sea level rise</b>	<b>91</b>
<b>Table 9-2 Summary of model runs for climate change consideration</b>	<b>92</b>
<b>Table 9-3 Changes in peak flood levels (m) for climate change scenarios</b>	<b>92</b>
<b>Table 10-1 Number of properties affected by above floor flooding for various design flood events.</b>	<b>96</b>
<b>Table 10-2 Estimated flood damages</b>	<b>100</b>
<b>Table 10-3 Flood damages sensitivity to climate change</b>	<b>100</b>

## GLOSSARY

<b>annual exceedance probability (AEP)</b>	The chance of a flood of a given size (or larger) occurring in any one year, usually expressed as a percentage. For example, if a peak flood discharge of 500 m <sup>3</sup> /s has an AEP of 5%, it means that there is a 5% chance (i.e. a 1 in 20 chance) of a peak discharge of 500 m <sup>3</sup> /s (or larger) occurring in any one year. (see also average recurrence interval)
<b>Australian Height Datum (AHD)</b>	National survey datum corresponding approximately to mean sea level.
<b>Astronomical Tide</b>	Astronomical Tide is the cyclic rising and falling of the Earth's oceans water levels resulting from gravitational forces of the Moon and the Sun acting on the Earth.
<b>attenuation</b>	Weakening in force or intensity.
<b>average recurrence interval (ARI)</b>	The long-term average number of years between the occurrence of a flood as big as (or larger than) the selected event. For example, floods with a discharge as great as (or greater than) the 20 year ARI design flood will occur on average once every 20 years. ARI is another way of expressing the likelihood of occurrence of a flood event. (see also annual exceedance probability)
<b>calibration</b>	The adjustment of model configuration and key parameters to best fit an observed data set.
<b>catchment</b>	The catchment at a particular point is the area of land that drains to that point.
<b>design flood event</b>	A hypothetical flood representing a specific likelihood of occurrence (for example the 100 year ARI or 1% AEP flood).
<b>development</b>	Existing or proposed works that may or may not impact upon flooding. Typical works are filling of land, and the construction of roads, floodways and buildings.
<b>discharge</b>	The rate of flow of water measured in terms of volume per unit time, for example, cubic metres per second (m <sup>3</sup> /s). Discharge is different from the speed or velocity of flow, which is a measure of how fast the water is moving for example, metres per second (m/s).
<b>flood</b>	Relatively high river or creek flows, which overtop the natural or artificial banks, and inundate floodplains and/or coastal inundation resulting from super elevated sea levels and/or waves overtopping coastline defences.
<b>flood behaviour</b>	The pattern / characteristics / nature of a flood.
<b>flood fringe</b>	Land that may be affected by flooding but is not designated as floodway or flood storage.
<b>flood hazard</b>	The potential risk to life and limb and potential damage to property resulting from flooding. The degree of flood hazard varies with circumstances across the full range of floods.

<b>flood level</b>	The height or elevation of floodwaters relative to a datum (typically the Australian Height Datum). Also referred to as “stage”.
<b>flood liable land</b>	see flood prone land
<b>floodplain</b>	Land adjacent to a river or creek that is periodically inundated due to floods. The floodplain includes all land that is susceptible to inundation by the probable maximum flood (PMF) event.
<b>floodplain management</b>	The co-ordinated management of activities that occur on the floodplain.
<b>floodplain risk management plan</b>	A document outlining a range of actions aimed at improving floodplain management. The plan is the principal means of managing the risks associated with the use of the floodplain. A floodplain risk management plan needs to be developed in accordance with the principles and guidelines contained in the NSW Floodplain Management Manual. The plan usually contains both written and diagrammatic information describing how particular areas of the floodplain are to be used and managed to achieve defined objectives.
<b>Flood planning levels (FPL)</b>	Flood planning levels selected for planning purposes are derived from a combination of the adopted flood level plus freeboard, as determined in floodplain management studies and incorporated in floodplain risk management plans. Selection should be based on an understanding of the full range of flood behaviour and the associated flood risk. It should also take into account the social, economic and ecological consequences associated with floods of different severities. Different FPLs may be appropriate for different categories of landuse and for different flood plans. The concept of FPLs supersedes the “standard flood event”. As FPLs do not necessarily extend to the limits of flood prone land, floodplain risk management plans may apply to flood prone land beyond that defined by the FPLs.
<b>flood prone land</b>	Land susceptible to inundation by the probable maximum flood (PMF) event. Under the merit policy, the flood prone definition should not be seen as necessarily precluding development. Floodplain Risk Management Plans should encompass all flood prone land (i.e. the entire floodplain).
<b>flood source</b>	The source of the floodwaters.
<b>flood storage</b>	Floodplain area that is important for the temporary storage of floodwaters during a flood.
<b>floodway</b>	A flow path (sometimes artificial) that carries significant volumes of floodwaters during a flood.
<b>freeboard</b>	A factor of safety usually expressed as a height above the adopted flood level thus determining the flood planning level. Freeboard tends to compensate for factors such as wave action, localised hydraulic effects and uncertainties in the design flood levels.
<b>geomorphology</b>	The study of the origin, characteristics and development of land forms.

<b>gauging (tidal and flood)</b>	Measurement of flows and water levels during tides or flood events.
<b>historical flood</b>	A flood that has actually occurred.
<b>hydraulic</b>	Relating to water flow in rivers, estuaries and coastal systems; in particular, the evaluation of flow parameters such as water level and velocity
<b>hydrodynamic</b>	Pertaining to the movement of water.
<b>hydrograph</b>	A graph showing how a river or creek's discharge changes with time.
<b>hydrographic survey</b>	Survey of the bed levels of a waterway.
<b>hydrologic</b>	Pertaining to rainfall-runoff processes in catchments
<b>hydrology</b>	The term given to the study of the rainfall-runoff process in catchments.
<b>hyetograph</b>	A graph showing the distribution of rainfall over time.
<b>Intensity Frequency Duration (IFD) Curve</b>	A statistical representation of rainfall showing the relationship between rainfall intensity, storm duration and frequency (probability) of occurrence.
<b>isohyet</b>	Equal rainfall contour.
<b>morphological</b>	Pertaining to geomorphology.
<b>peak flood level, flow or velocity</b>	The maximum flood level, flow or velocity that occurs during a flood event.
<b>pluviometer</b>	A rainfall gauge capable of continuously measuring rainfall intensity
<b>probable maximum flood (PMF)</b>	An extreme flood deemed to be the maximum flood likely to occur.
<b>probability</b>	A statistical measure of the likely frequency or occurrence of flooding.
<b>riparian</b>	The interface between land and waterway. Literally means "along the river margins"
<b>runoff</b>	The amount of rainfall from a catchment that actually ends up as flowing water in the river or creek.
<b>stage</b>	See flood level.
<b>stage hydrograph</b>	A graph of water level over time.
<b>sub-critical</b>	Refers to flow in a channel that is relatively slow and deep
<b>topography</b>	The shape of the surface features of land

<b>velocity</b>	The speed at which the floodwaters are moving. A flood velocity predicted by a 2D computer flood model is quoted as the depth averaged velocity, i.e. the average velocity throughout the depth of the water column. A flood velocity predicted by a 1D or quasi-2D computer flood model is quoted as the depth and width averaged velocity, i.e. the average velocity across the whole river or creek section.
<b>validation</b>	A test of the appropriateness of the adopted model configuration and parameters (through the calibration process) for other observed events.
<b>water level</b>	See flood level.

---

# 1 INTRODUCTION

The Darling Harbour Flood Study has been prepared for the City of Sydney to define the existing flood behaviour in the Darling Harbour catchment and establish the basis for subsequent floodplain management activities.

The study is being prepared to meet the objectives of the NSW State Government's Flood Prone Land Policy.

The study was undertaken in a staged approach as outlined below:

- Stage 1 - Collection, Compilation and Review of Available Information;
- Stage 2 – Model development, Calibration and Validation;
- Stage 3 – Design Modelling and Mapping;
- Stage 4 – Draft Flood Study Report; and
- Stage 5 – Final Flood Study Report.

An interim report outlining the methodologies, analysis and key outcomes has been provided at the completion of each stage. This report is the Stage 5 Final Flood Study Report.

## 1.1 The Study Location

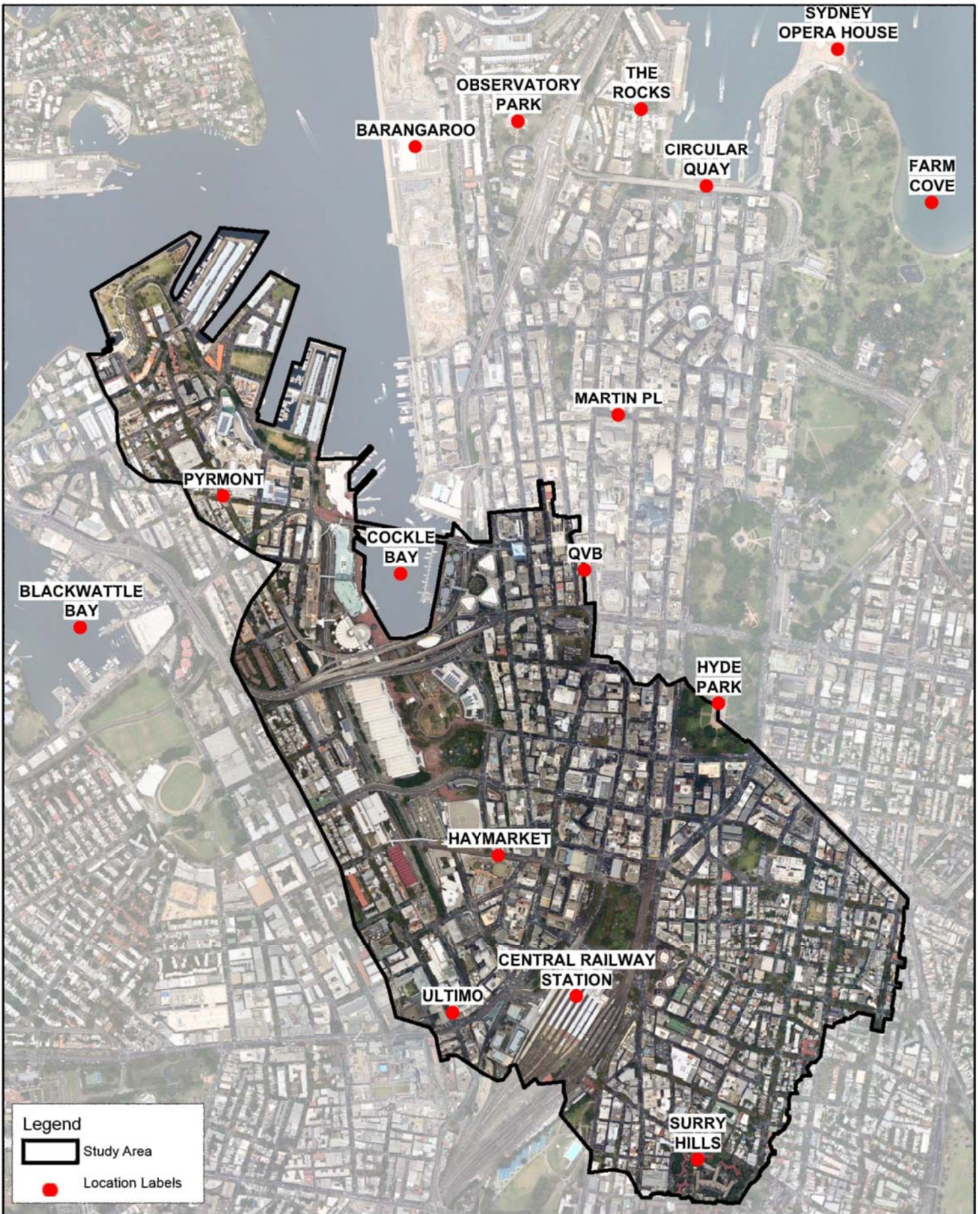
The Darling Harbour catchment, shown in Figure 1-1, is located in Sydney's inner-city suburbs of Haymarket, Surry Hills and parts of Pyrmont, Ultimo and Sydney. The catchment lies wholly within the Local Government Area (LGA) under the control of the City of Sydney. The catchment drains an area of approximately 307 ha (3.07 km<sup>2</sup>).

## 1.2 The Need for Floodplain Management within the Darling Harbour Catchment

Historical records indicate that flooding has occurred at various locations within the Darling Harbour catchment. Prior to this current study, a comprehensive flood study has not been undertaken for this catchment to accurately determine the flood liability within the catchment. In order to reduce the risk to existing flood prone properties and manage the future land use of flood prone land, effective floodplain management strategies are required.

The Darling Harbour Flood Study includes the entire catchment and includes all sources of flooding (e.g. rainfall, tides) in a single state-of-the-art model. Current practice in floodplain management also requires consideration of the impact of potential climate change scenarios on design flood conditions. For the Darling Harbour catchment this includes increases in design rainfall intensities and sea level rise scenarios impacting on ocean and estuarine boundary conditions. Accordingly, these potential changes may translate into increased design flood inundation in the catchment, such that future planning and floodplain management in the catchment will need to take due consideration of this increased flood risk.



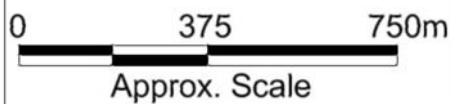


Title:  
**Darling Harbour Catchment  
 Study Area Locality**

Figure:  
**1-1**

Rev:  
**1**

BMT WBM endeavours to ensure that the information provided in this map is correct at the time of publication. BMT WBM does not warrant, guarantee or make representations regarding the currency and accuracy of information contained in this map.



## 1.3 The Floodplain Management Process

The NSW State Government's Flood Prone Land Policy is directed towards providing solutions to existing flooding problems in developed areas and to potential future increases in flood risk, and ensuring that new development is compatible with the flood hazard and does not create additional flooding problems in other areas. Consideration is also given to the change in flood risk to existing and future development through potential climate change. Policy and practice are defined in the NSW State Government's Floodplain Development Manual (2005).

Under the Policy the management of flood liable land remains the responsibility of Local Government. The NSW State Government subsidises floodplain management studies and flood mitigation works to manage existing problems and provides specialist technical advice to assist Council in the discharge of Council's floodplain management responsibilities.

The Policy provides for technical and financial support by the NSW State Government through the six sequential stages shown in Table 1-1.

**Table 1-1 Stages of the Floodplain Management Process**

Stage Number	Stage Name	Description
1	Formation of a Committee	Established by Council and includes community group representatives and State agency specialists.
2	Data Collection	Past data such as flood levels, rainfall records, land use, soil types etc.
3	Flood Study	Determines the nature and extent of the flood problem.
4	Floodplain Risk Management Study	Evaluates management options for the floodplain in respect of both existing and proposed developments.
5	Floodplain Risk Management Plan	Involves formal adoption by Council of a plan of management for the floodplain.
6	Implementation of the Floodplain Risk Management Plan	Construction of flood mitigation works to protect existing development. Use of local environmental plans to ensure new development is compatible with the flood hazard.

This study represents Stages 2 and 3 of this process and aims to provide an understanding of existing and future flood behaviour within the Darling Harbour catchment.

### 1.3.1 Climate Change Policy

Climate change is expected to have adverse impacts upon sea levels and rainfall intensities, both of which may have significant influence on flood behaviour at specific locations. The primary impacts of climate change in coastal areas are likely to result from sea level rise, which, coupled with a potential increase in the frequency and severity of storm events, may lead to increased coastal erosion, tidal inundation and flooding.

In 2009 the NSW State Government announced the NSW Sea Level Rise Policy Statement (DECCW, 2009) that adopted sea level rise planning benchmarks to ensure consistent consideration of sea level rise in coastal areas of NSW. These planning benchmarks adopt increases (above 1990

mean sea level) of 40 cm by 2050 and 90 cm by 2100. However, on 8 September 2012 the NSW Government announced its Stage One Coastal Management Reforms which no longer recommends state-wide sea level rise benchmarks for use by local councils. Instead councils have the flexibility to consider local conditions when determining future hazards of potential sea level rise.

Accordingly, it is recommended by the NSW Government that councils should consider information on historical and projected future sea level rise that is widely accepted by scientific opinion. This may include information in the NSW Chief Scientist and Engineer's Report entitled 'Assessment of the Science behind the NSW Government's Sea Level Rise Planning Benchmarks' (2012).

The NSW Chief Scientist and Engineer's Report (2012) acknowledges the evolving nature of climate science, which is expected to provide a clearer picture of the changing sea levels into the future. The report identified that:

- The science behind sea level rise benchmarks from the 2009 NSW Sea level Rise Policy Statement was adequate;
- Historically, sea levels have been rising since the early 1880's;
- There is considerable variability in the projections for future sea level rise; and
- The science behind the future sea level rise projections is continually evolving and improving.

The potential impacts of sea level rise have been based on sea level rise projections from the 2009 NSW Sea Level Rise Policy Statement. Given that the Chief Scientist and Engineer's Report identifies the science behind these sea level rise projections is adequate, it was agreed between Council and BMT WBM that the potential impacts of sea level rise for the Darling Harbour catchment should be based on the best available information during preparation of this report.

For Darling Harbour, rising sea level is expected to increase the frequency, severity and duration of flooding in the lower reaches of the catchment.

In 2007 the NSW Government released a guideline for practical consideration of climate change in the floodplain management process that advocates consideration of increased design rainfall intensities of up to 30%. Accordingly, this increase in design rainfall intensity will translate into increased flood inundation in the Darling Harbour catchment. Future planning and floodplain management in the catchment will need to take due consideration of this increased flood risk.

In consultation with Council and the Office of Environment and Heritage (OEH), a range of climate change sensitivity tests incorporating combinations of sea level rise and increased design rainfall intensity have been formulated. The results of these sensitivity tests (refer Section 9) were then compared to the base case (i.e. models with existing sea level and climate) model results in order to assess the potential increase in flood risk due to climate change.

## 1.4 Study Objectives

The primary objective of the study has been define the flood behaviour under existing and future conditions (incorporating potential impacts of climate change) in the Darling Harbour catchment for a full range of design events. The study has produced information on flood levels and depths,

velocities, flows, hydraulic categories and provisional hazard categories. This has been established for existing and future conditions for a full range of design flood events. The flood study has also identified the impact on flood behaviour as a result of future climate change and potential changes in the catchment. Specifically, the study incorporates:

- Compilation and review of existing information pertinent to the study;
- A community consultation and participation program to identify local flooding concerns, collect information on historical flood behaviour and engage the community in the on-going floodplain management process;
- Development and verification of appropriate hydrologic and hydraulic models;
- Determination of design flood conditions for a range of design events - including the 2 year ARI, 5 year ARI, 10% AEP (10 year ARI), 5% AEP (20 year ARI), 2% AEP (50 year ARI), 1% AEP (100 year ARI), 0.2% AEP (500 year ARI) and Probable Maximum Flood (PMF – an extreme flood event);
- Cost of flood damages for existing conditions using a full range of design flood events;
- Examination of potential impact of climate change using the latest guidelines for the 1% AEP design event; and
- Presentation of study methodology, results and findings in a comprehensive report incorporating detailed flood mapping.

The models and results produced in this study are intended to:

- Outline the flood behaviour within the catchment to aid Council's strategic land use management planning; and
- Form the basis for a subsequent floodplain risk management study where detailed assessment of flood mitigation options and floodplain risk management measures will be undertaken.

## 1.5 About this Report

This report documents the Study's objectives, results and recommendations.

**Section 1** introduces the study.

**Section 2** provides an overview of the study and summary of background information.

**Section 3** outlines the community consultation program undertaken.

**Section 4** details the development of the computer models.

**Section 5** details the hydraulic model calibration and validation process.

**Section 6** details the design flood conditions.

**Section 7** presents the design flood results.

**Section 8** presents the results of sensitivity analysis.

**Section 9** presents results of climate change analysis.

**Section 10** presents flood damage assessment.

## **2 STUDY APPROACH**

### **2.1 The Study Area**

#### **2.1.1 Catchment Description**

The catchment shown in Figure 2-1 is fully developed and comprises predominantly high-density housing and commercial development. There are some large open spaces within the catchment including Belmore Park, Harmony Park and part of Hyde Park. The lower portion of the catchment includes Tumbalong Park and the Chinese Garden of Friendship near the main discharge point to Cockle Bay. The catchment includes large facilities such as the Sydney Entertainment Centre, Sydney Exhibition Centre and part of the University of Technology Sydney (UTS) premises.

The catchment covers an area of about 307 ha and drains into Sydney Harbour at various locations with the majority of the catchment discharging to Darling Harbour via Sydney Water's main trunk drainage system. This trunk drainage network is connected to Council's minor stormwater drainage system which comprises covered channels, pipes, culverts and pits. There are no open channel reaches within the Darling Harbour catchment.

A major infrastructure project is planned within the Darling Harbour study area. The Sydney International Convention Exhibition and Entertainment Precinct (SICEEP) is to be constructed, replacing the existing Sydney Entertainment Centre and Sydney Exhibition Centre.

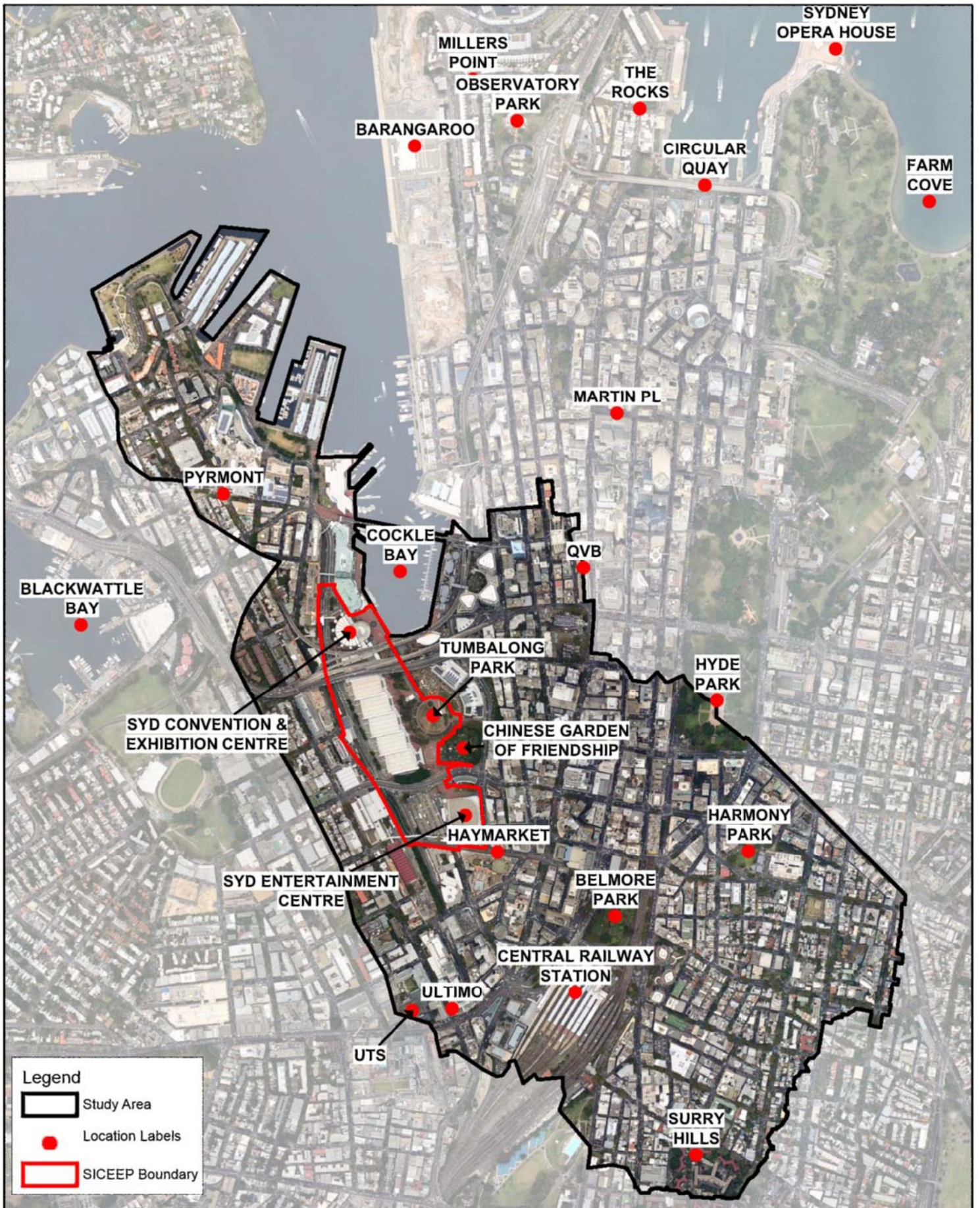
The topography within the Darling Harbour catchment varies from steep surface slopes in excess of 10% in the upper catchment to the near flat lower catchment adjacent the Sydney Harbour shoreline. The catchment therefore has regions where surface water runoff within the road network has high velocity with shallow depths, whilst in the lower catchment surface water is more likely to pond in sag points and flow velocities will be lower. The lower reaches of the catchment fringing the Sydney Harbour are potentially affected by elevated water levels within the Harbour.

Within the catchment there are various excavation and cuttings, resulting in some vertical drops of over 10m.




The entire catchment is highly developed with very little opportunity for water to infiltrate due to the high degree of impervious surfaces. It has been calculated that the combined area of roofs and roads is in excess of 50% of the catchment area. As a sign of the age of the region and high density nature, most properties are brick or sandstone construction with common walls to neighbours. There are very few opportunities for flow to pass through or between properties and as a result the roads form the primary overland flow paths.

#### **2.1.2 Stormwater Drainage System**

The Darling Harbour catchment was first settled in the late 18<sup>th</sup> Century. The original natural drainage system comprised rock gullies draining to small pockets of mangroves along the shoreline. As development proceeded within the catchment, the land use changed to a higher proportion of impervious surfaces leading to increased runoff volumes and peak flows. It followed that the natural drainage lines were incorporated into the constructed drainage system of open channels. By the late



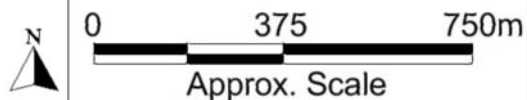
**Legend**

-  Study Area
-  Location Labels
-  SICEEP Boundary

Title:  
**Darling Harbour Catchment Study Area**

Figure: **2-1**      Rev: **1**

BMT WBM endeavours to ensure that the information provided in this map is correct at the time of publication. BMT WBM does not warrant, guarantee or make representations regarding the currency and accuracy of information contained in this map.



19<sup>th</sup> Century, much of the channel system was progressively covered over and piped, with much of the original system forming the backbone of the stormwater drainage system in place today.

The study area contains the Hay Street Stormwater Channel which has been listed on the Heritage and Conservation Register as maintained by Sydney Water. The channel is one of the first five original combined sewers constructed in Sydney around the 1860 period. This feature is no longer a combined sewer/stormwater pipe and now conveys only stormwater, giving the pipe a relatively higher flow conveyance compared with newer drainage elements.

There have been various amplifications of the trunk drainage system within the study area, as detailed in the Sydney Water Capacity Assessment Report (SWC, 1996). The current drainage system is therefore a combination of various eras of trunk drainage design and installation.

In rainfall events where flows exceed the piped system capacity, surface water runoff is generally conveyed within the road system as uncontrolled flow. When this occurs, there is potential for high hazard flooding conditions resulting from combined high flow velocities and depths.

There are no open channels within the study area to assist with drainage.

### 2.1.3 Known Flooding Problems

Council has indicated that flooding within the catchment occurs at various locations in rainfall events exceeding 2 year ARI. June 1949, November 1961, March 1973, November 1984, January 1991 and February 2001 are noted historic major storm events which resulted in extensive flooding. Rainfall analysis was undertaken for these months using the Observatory Hill gauge. Table 2-1 shows the results of this rainfall analysis. The November 1984 rainfall event was the largest analysed and was in excess of a 0.2 % AEP (500 year ARI) event. Review of rainfall data for the month of March 1973 and February 2001 indicated substantial gaps in data and no significant recorded rainfall event. It is therefore assumed that the gauge failed for the events.

**Table 2-1 Rainfall analysis of key historic rainfall events**

Event	Peak % AEP
15 June 1949	~ 20 % AEP (~5 year ARI)
18-19 November 1961	~ 5 % AEP (~20 year ARI)
March 1973	Gauge Failed
9 November 1984	< 0.2 % AEP (> 500 year ARI)
27 January 1991	~ 2 % AEP (~50 year ARI)
February 2001	Gauge Failed

It should be noted that the most recent of these key flood events (2001) occurred over 10 years ago and given the amount of time that has since passed it has been difficult obtaining records of flood behaviour for any of the events, specifically:

- Peak flood level survey data are not available for any of these events;
- Review of archived newspaper articles has found limited reports of the 1949 and other events. This data is useful, though due to its anecdotal nature it has limited value with respect to quantitative calibration data (e.g. observed flood levels and depths);



- Limited data has been recorded in the Sydney Water flooding database; and
- The median term of residency determined from the community consultation (refer to Section 3) is 8 years, indicating that many of the current residents did not experience any of these historic flooding events.

## 2.2 Compilation and Review of Available Data

### 2.2.1 Introduction

The data compilation and review was been undertaken as the first stage in this flood study in order to consolidate and summarise all of the currently available data, and identify any significant data gaps that may affect the successful completion of the study. This allowed for the missing data to be collected during the initial phases of the study.

The review included:

- Previous studies undertaken within the Darling Harbour catchment;
- Available water level, tide and rainfall data; and
- Sydney Water flooding complaints register.

Council has provided digitally available information such as aerial photography, cadastral boundaries, watercourses, and drainage networks in the form of GIS datasets.

### 2.2.2 Previous Studies and Investigations

Comprehensive flood modelling has not previously been undertaken for the entire Darling Harbour catchment. A focused study has been undertaken for Darling Harbour Live and a key Sydney Water document provides details of the trunk stormwater assets within in the study area including capacity assessment. Flood Studies in neighbouring catchments with similar topographic features and urban densities have recently been undertaken. Details of these relevant studies are summarised below.

#### 1. City Area SWC 30 Capacity Assessment (Sydney Water, 1996).

This report prepared by Sydney Water assessed the quantitative performance of stormwater drainage elements within Sydney Water's City Area SWC30. The document categorises drainage elements into one of four "land use design ARI" as presented below. For each drainage element the actual performance (ARI flow required to exceed hydraulic capacity) is compared to desired performance for the land use design ARI categorisation. Further assessment and comment is made upon the likely impacts of future urban consolidation which would result in increased impervious areas and hence increased flows.

- Low density residential, minor roads and open spaces represented by a 5 year design ARI;
- Business, commercial and industrial areas, intensely developed residential areas, and local access road culverts reflected by a 10 year design ARI;

- Intense business, commercial and industrial, major secondary roads, major railway culverts, highways and freeways, 20 year design ARI: and
- Central business districts and the wider service corridors where the channel is obviously a trunk drain as designed by AR&R, a 100 year design ARI is compared to.

The drainage area SWC30 covers a greater area than the Darling Harbour study area. Trunk drainage for the Darling Harbour catchment is under the following SWC30 drainage area sub-systems: 30A, 30A2, 30B, 30L, 30M, 30O, 30P, 30R, 30T, 30U, 30V, 30W and 30XY.

Details of pipe capacity as well as dimensions and hydraulic parameterisation are extensively detailed within this report. This data has been digitised for the hydraulic model build of the current study.

## **2. Blackwattle Bay Catchment Flood Study (Final Report) (WMA, 2012a)**

This flood study report prepared by WMAwater for the City of Sydney details the flooding behaviour in the Blackwattle Bay catchment. The Blackwattle Bay catchment is immediately adjacent (to the west) of the Darling Harbour catchment.

The hydrodynamic modelling program TUFLOW was used to model both the hydrologic and hydraulic processes in the catchment (direct-rainfall). The study area covers approximately 315 ha and was modelled with a 2 m grid cell.

26<sup>th</sup> January 1991 and 17<sup>th</sup> February 1993 were adopted as the calibration and verification events, respectively, though very limited data were available for this process.

As part of the study a flood damage assessment was undertaken for all standard design events. Impacts of climate change and sea level rise were also considered.

A critical storm duration of 120 minutes was adopted for all non-PMF design event simulations, whilst the 1 hour event was adopted for the PMF event.

Design rainfall losses adopted were as follows:

- Pervious areas: Initial Loss 10 mm; Continuing Loss 2.5 mm/h
- Impervious areas: Initial Loss 1.5mm; Continuing Loss 0mm/h

## **3. Johnstons Creek Catchment Flood Study (Final Report) (WMA, 2012b)**

This flood study report prepared by WMAwater for the City of Sydney details the flooding behaviour in the Johnstons Creek catchment. The Johnstons Creek catchment is immediately adjacent (to the west) of the Blackwattle Bay Catchment and is approximately 2 km from the Darling Harbour catchment.

The hydrodynamic modelling program TUFLOW was used to model both the hydrologic and hydraulic processes in the catchment (direct-rainfall). The study area covers approximately 224 ha and was modelled with a 2 m grid cell.

Model calibration was not undertaken since surveyed records of flooding were unavailable and there is no flow monitoring within the catchment. Model verification therefore focused on simulating flood hot-spots and generating a similar specific yield to neighbouring calibrated catchments.

As part of the study a flood damage assessment was undertaken for all standard design events. Impacts of climate change and sea level rise were also considered.

A critical storm duration of 120 minutes was adopted for all non-PMF design event simulations whilst the 3 hour event was adopted for the PMF event.

Design rainfall losses adopted were as follows:

- Pervious areas: Initial Loss 10 mm; Continuing Loss 2.5 mm/h
- Impervious areas: Initial Loss 1.5mm; Continuing Loss 0mm/h

#### **4. Darling Harbour Live – SICEEP – FLOODING & STORMWATER (Hyder, 2013)**

This Flooding and Stormwater report has been prepared by Hyder for the whole of the study area precinct for the Sydney International Convention, Exhibition and Entertainment Precinct (SICEEP)

The SICEEP Project is a state significant development which commits to reposition Sydney to the centre stage for hosting world class events. The development is large scaled and involves demolition of existing buildings, tree removal, new building construction, new recreation areas and extension and augmentation of infrastructure.

For this study, a Flood Study was prepared to first determine the existing flood behaviour within the SICEEP and included a climate change assessment. The developed model was a 2D TUFLOW hydraulic model. A DRAINS model was developed to derive hydrological inputs. It is noted that the adopted tailwater level within Cockle Bay was 0.9 mAHD. Design pit blockage assumptions for on-grade pits are 30% blocked and sag pits are assumed 50% blocked.

##### *2.2.2.1 Summary of Previous Studies*

Very little flood modelling has been undertaken in Darling Harbour study area, with no existing models which are suitable to adapt for this study. The modelling that has been undertaken in the SICEEP Darling Harbour site provides data valuable for the purpose of model verification within the limited area of overlap between the studies.

Council commissioned Flood Studies have been completed for the neighbouring Blackwattle Bay and Johnstons Creek. In order to provide consistency for Council, the current study has, where possible, maintained consistency between these studies with respect to modelling approach and parameterisation.

### **2.2.3 Rainfall Data**

There is an extensive network of rainfall gauges across the Sydney area, many of which are operated by the Bureau of Meteorology (BoM) and Sydney Water Corporation (SWC). However, there are no rainfall stations located within the Darling Harbour catchment area. The closest station to the study area is a BoM station located at Observatory Hill within the adjacent City Area stormwater catchment,

approximately 1km from the centre of the Darling Harbour catchment. This rainfall station has a long period of record, commencing in 1858.

There are two more rainfall stations located in close proximity to the study area, resulting in a suitable density of daily rainfall stations to define historic rainfall. A list of these relevant rainfall stations with their respective period of record is shown in Table 2-2, with the spatial distribution of the rainfall stations shown in Figure 2-2. This combination of daily rainfall stations and the Observatory Hill pluviometer to define the temporal pattern of rainfall presents a high quality rainfall data set for use in this Flood Study.

**Table 2-2 Rainfall stations in the Darling Harbour catchment locality area**

Station #	Name	Record Period	Type
066006	Sydney Botanic Gardens	1885 – 2011	Daily
066062	Sydney (Observatory Hill)	1858 – 2013	Daily/Pluviometer
066160	Sydney Centennial Park	1990 - 2010	Daily

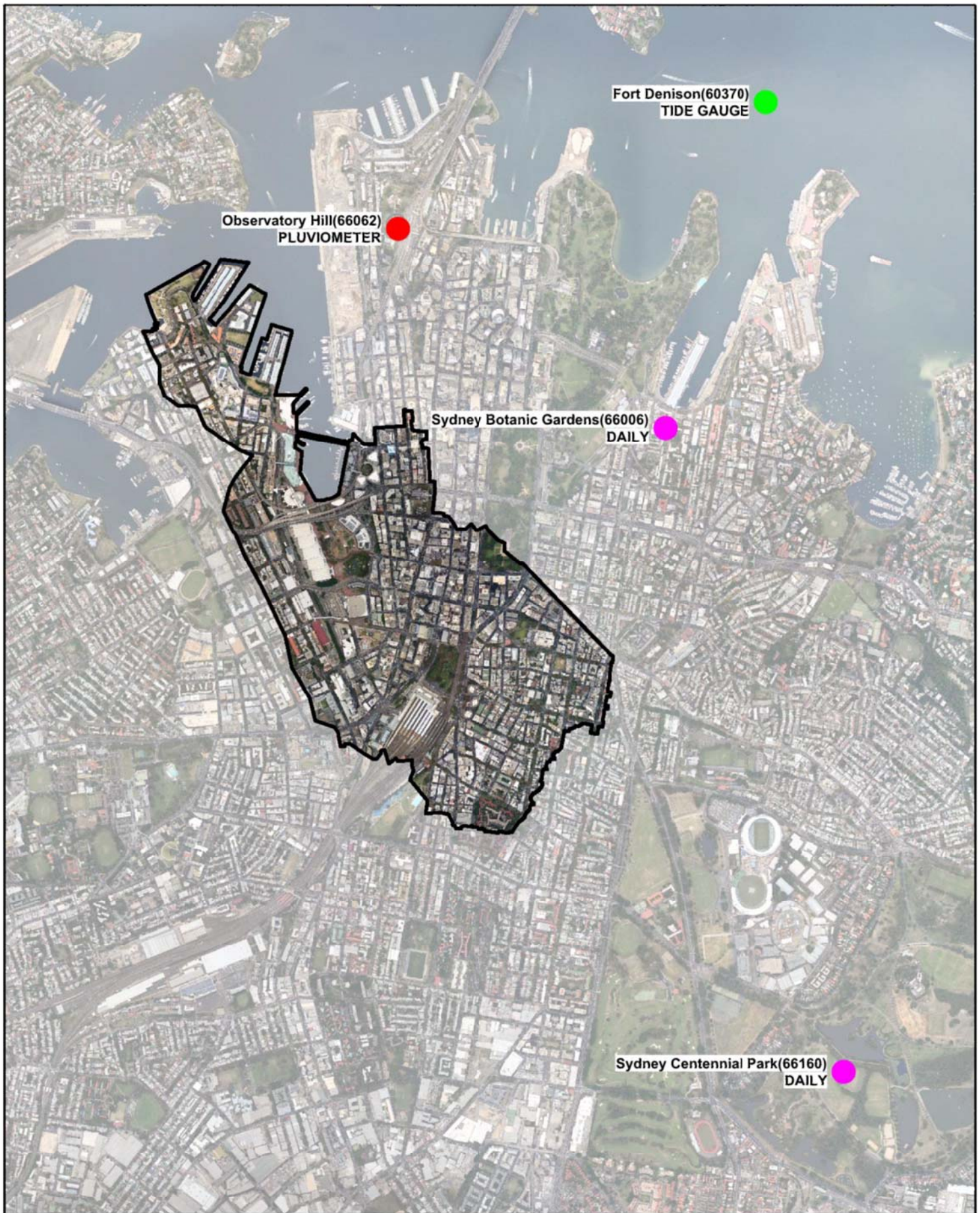
#### 2.2.4 Stream Gauge Data

There are no stream gauging data within the study area. This is a common data deficiency in urban catchments.

#### 2.2.5 Harbour Water Level Data

The Darling Harbour catchment flows into Cockle Bay, a small embayment within Darling Harbour, itself lying within the broader Sydney Harbour. Consequently, the water level within Darling Harbour can act as a significant downstream control for both overland and piped flows under flooding conditions resulting from rainfall events.

Consideration of the most appropriate tailwater condition is required for the historic event calibration and design event modelling. For all calibration events, a dynamic tailwater boundary for Darling Harbour has been adopted based on water level records from Fort Denison (see Figure 2-2). This data has been obtained from the Bureau of Meteorology's National Tidal Centre. Design event water levels within Sydney Harbour comprise a constant water level based on a frequency analysis of Fort Denison's water level records. Table 2-3 presents the design peak water levels for Sydney Harbour (DECC, 2008). Discussion in later sections presents the assumed joint probability of rainfall events with elevated harbour tailwater level.

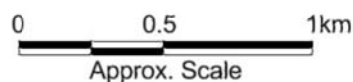


Title:  
**Darling Harbour Catchment  
 BOM Rainfall Stations**

Figure:  
**2-2**

Rev:  
**1**

BMT WBM endeavours to ensure that the information provided in this map is correct at the time of publication. BMT WBM does not warrant, guarantee or make representations regarding the currency and accuracy of information contained in this map.



**Table 2-3 Sydney Harbour design still water levels**

Frequency	Maximum Water Level (m AHD)
0.02 year ARI	0.965
0.05 year ARI	1.045
0.1 year ARI	1.095
1 year ARI	1.235
2 year ARI	1.275
5 year ARI	1.315
10% AEP	1.345
5% AEP	1.375
2% AEP	1.415
1% AEP	1.435
0.5% AEP	1.455

## 2.2.6 Flood Level Data

No peak flood level survey of historic flooding is available for this study. Model calibration has therefore relied on information received from community recollections of flooding via the community engagement process and from the Sydney Water Corporation (SWC) Historical Database of flooding incidents.

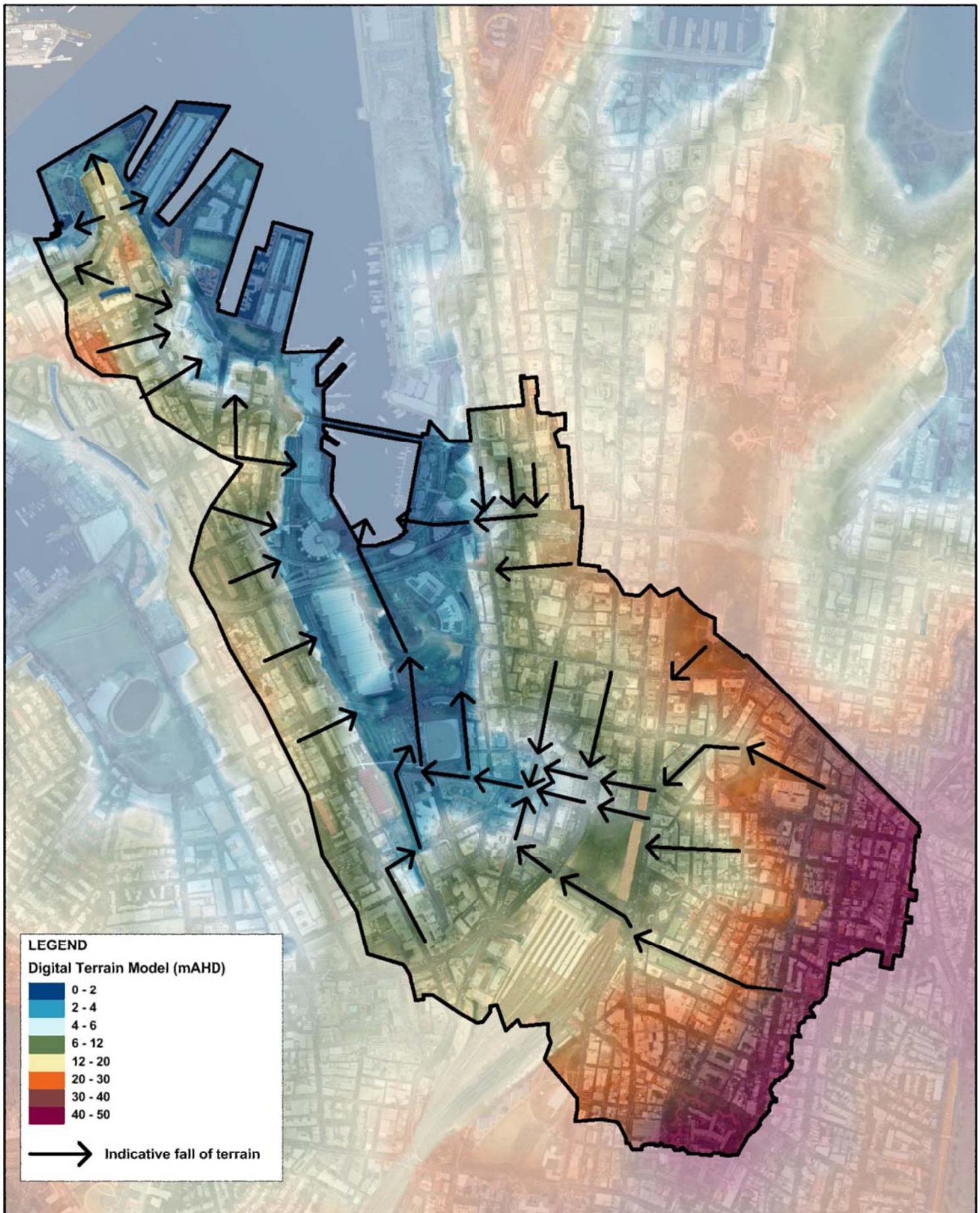
## 2.2.7 Topographic Data

Aerial topographic survey, also known as ALS (Airborne Laser Scanning) covering the study area has been provided by Council. ALS data typically has a vertical accuracy of +/- 0.15m with 68% confidence and horizontal accuracy of +/- 0.55m with 68% confidence.

The ALS data set has been provided as filtered data, where a filtering routine has been applied to remove non-ground features such as buildings and vegetation to provide a representation of the ground surface. The data set has been converted into a 1m resolution digital terrain model (DTM) using terrain modelling software. Non ground points have been provided as a separate dataset.

Section 4 discusses detailed interpretation of the ALS data and how the data has been enhanced for use in this study by applying post-processing methods since numerous large buildings and bridges within the study area influence the data provided.

Figure 2-3 shows the DTM developed for the study area, providing a visualisation of potential flow paths. The Pymont area is on a ridge and flow falls of each side towards the harbour. Darling Harbour has a significant upstream catchment area and is contributed by flows from Surry Hills and even sections of Hyde Park.



Title:  
**Darling Harbour Catchment  
 Digital Terrain Model**

Figure:  
**2-3**

Rev:  
**A**

BMT WBM endeavours to ensure that the information provided in this map is correct at the time of publication. BMT WBM does not warrant, guarantee or make representations regarding the currency and accuracy of information contained in this map.

